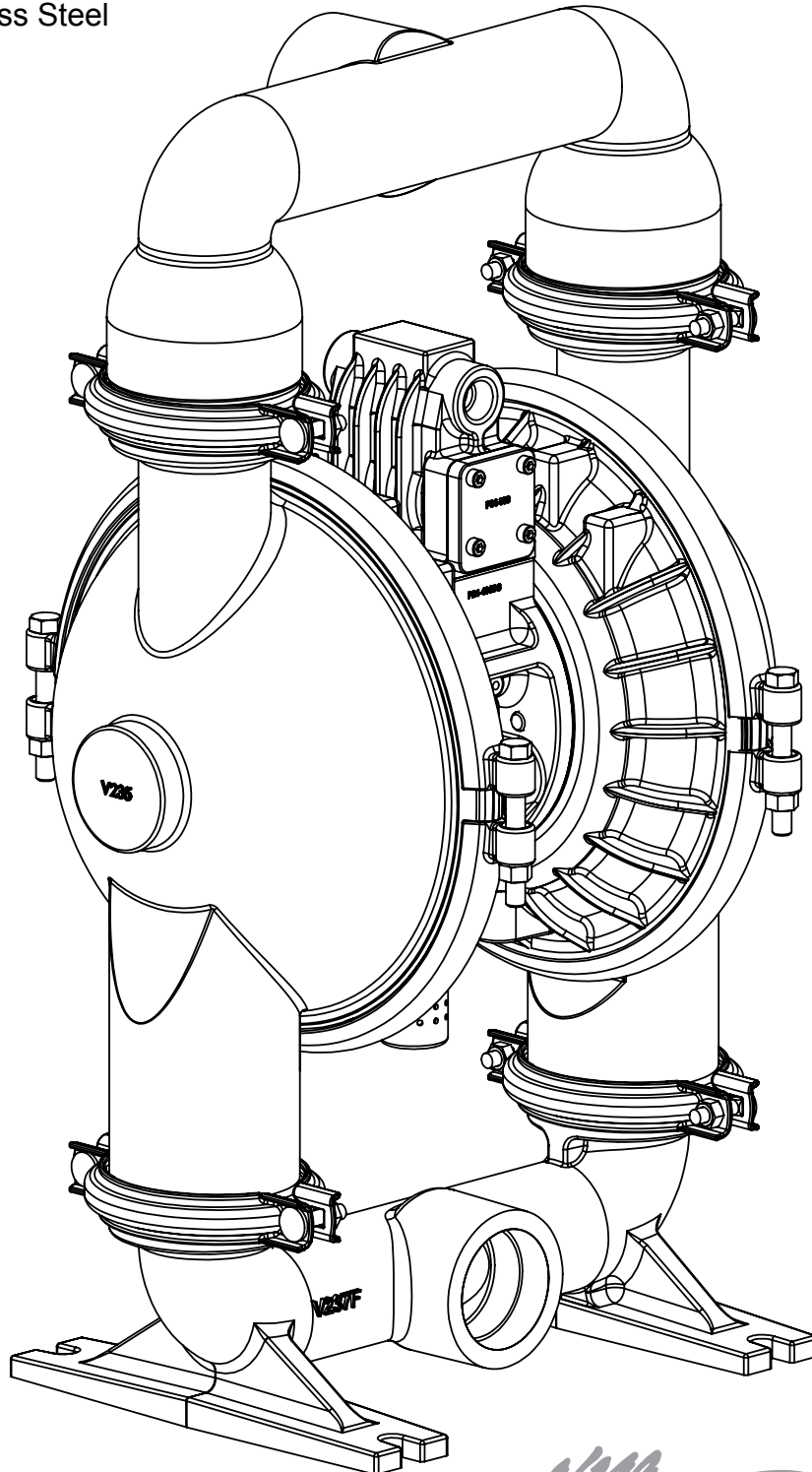


2" Elima-Matic Metallic Clamped – ATEX
with Metallic Center Section

E2

E2 Metallic Pumps

- Aluminum
- Cast Iron
- Stainless Steel



Performance

E2 - 2" Clamped Pump – Metallic Center ELASTOMERIC AND TPE FITTED - RUGGED

Flow Rate

Adjustable to 0-185 gpm (700 lpm)

Port Size

Suction 2" NPT
Discharge 2" NPT

Air Inlet 1/2" NPT

Air Exhaust 1" NPT

Suction Lift

Dry 17' (5.2 m)
Wet 32' (9.8 m)

Max Solid Size (Diameter)

..... 1/4" (6.4 mm)

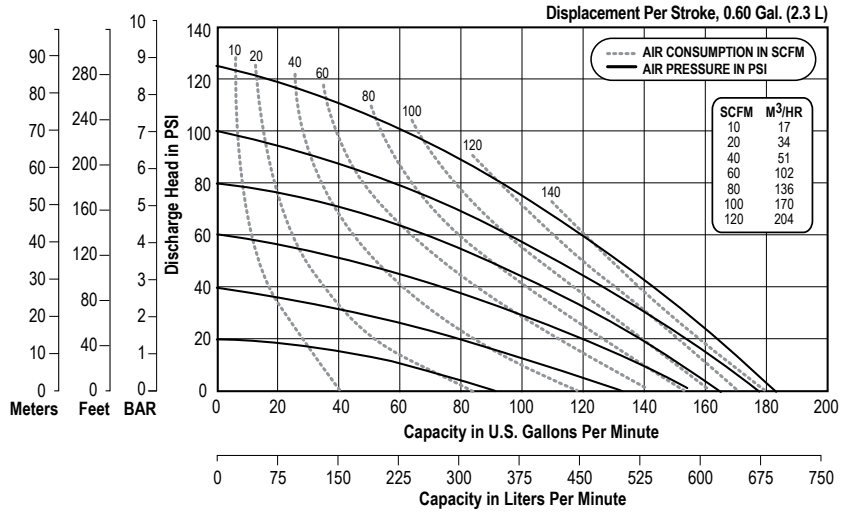
Max Noise Level

..... 96 dB(A)

Shipping Weights

Aluminum 65 lbs (29.5 kg)
Cast Iron 113 lbs (51.3 kg)
Stainless 106 lbs (48.1 kg)
** Stainless Center add 31 lbs. (68.3 kg)

1: PUMP SPECS



NOTE: Performance based on the following: elastomeric fitted pump, flooded suction, water at ambient conditions. The use of other materials and varying hydraulic conditions may result in deviations in excess of 5%.

E2 - 2" Clamped Pump – Metallic Center ELASTOMERIC AND TPE FITTED - DOMED

Flow Rate

Adjustable to 0-167 gpm (632 lpm)

Port Size

Suction 2" NPT
Discharge 2" NPT

Air Inlet 1/2" NPT

Air Exhaust 1" NPT

Suction Lift

Dry 18' (5.5 m)
Wet 31' (9.5 m)

Max Solid Size (Diameter)

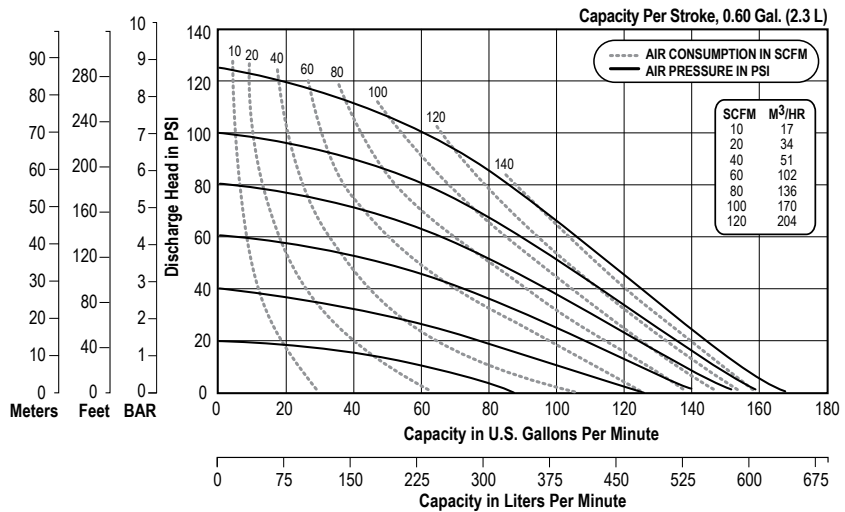
..... 1/4" (6.4 mm)

Max Noise Level

..... 97 dB(A)

Shipping Weights

Aluminum 65 lbs (29.5 kg)
Cast Iron 113 lbs (51.3 kg)
Stainless 106 lbs (48.1 kg)
** Stainless Center add 31 lbs. (68.3 kg)



NOTE: Performance based on the following: elastomeric fitted pump, flooded suction, water at ambient conditions. The use of other materials and varying hydraulic conditions may result in deviations in excess of 5%.

E2 - 2" Clamped Pump – Metallic Center PTFE FITTED

Flow Rate

Adjustable to 0-153 gpm (579 lpm)

Port Size

Suction 2" NPT
Discharge 2" NPT

Air Inlet 1/2" NPT

Air Exhaust 1" NPT

Suction Lift

Dry 12' (3.7 m)
Wet 31' (9.5 m)

Max Solid Size (Diameter)

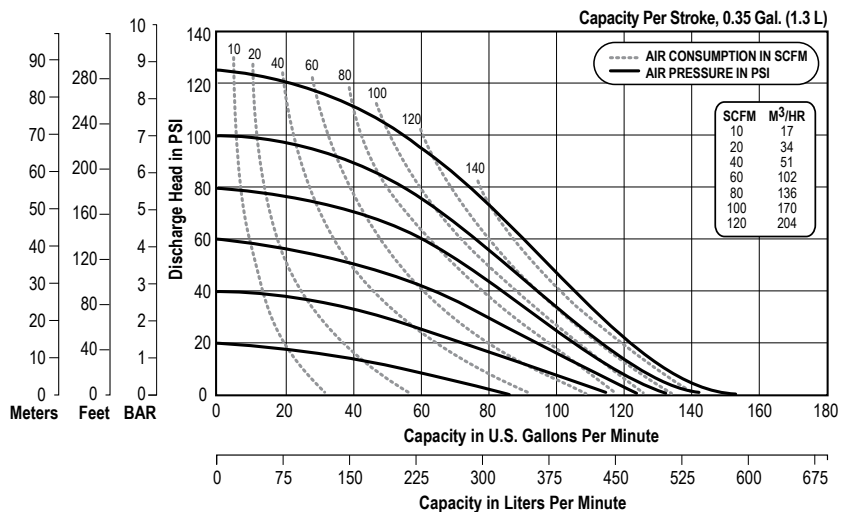
..... 1/4" (6.4 mm)

Max Noise Level

..... 102 dB(A)

Shipping Weights

Aluminum 65 lbs (29.5 kg)
Cast Iron 113 lbs (51.3 kg)
Stainless 106 lbs (48.1 kg)
** Stainless Center add 31 lbs. (68.3 kg)



NOTE: Performance based on the following: PTFE fitted pump, flooded suction, water at ambient conditions. The use of other materials and varying hydraulic conditions may result in deviations in excess of 5%.

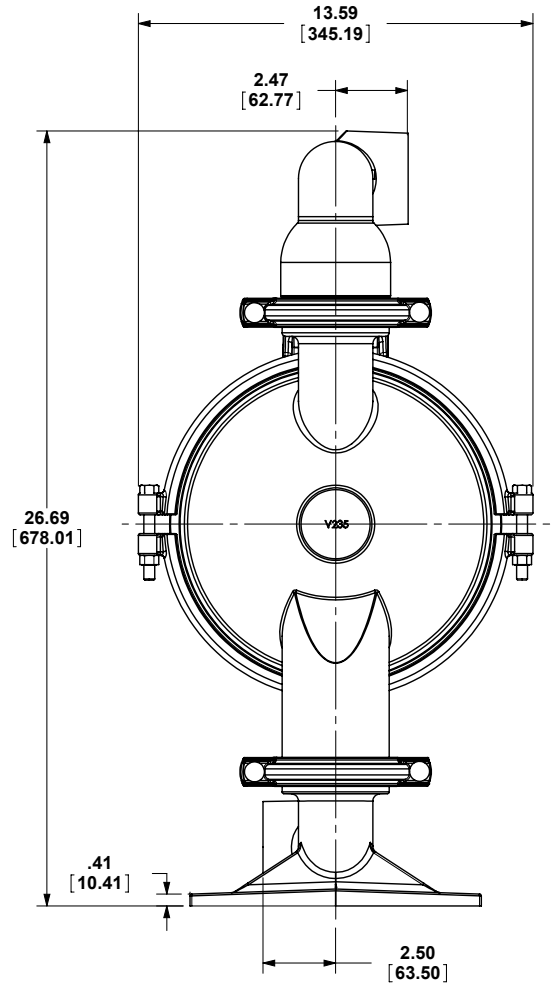
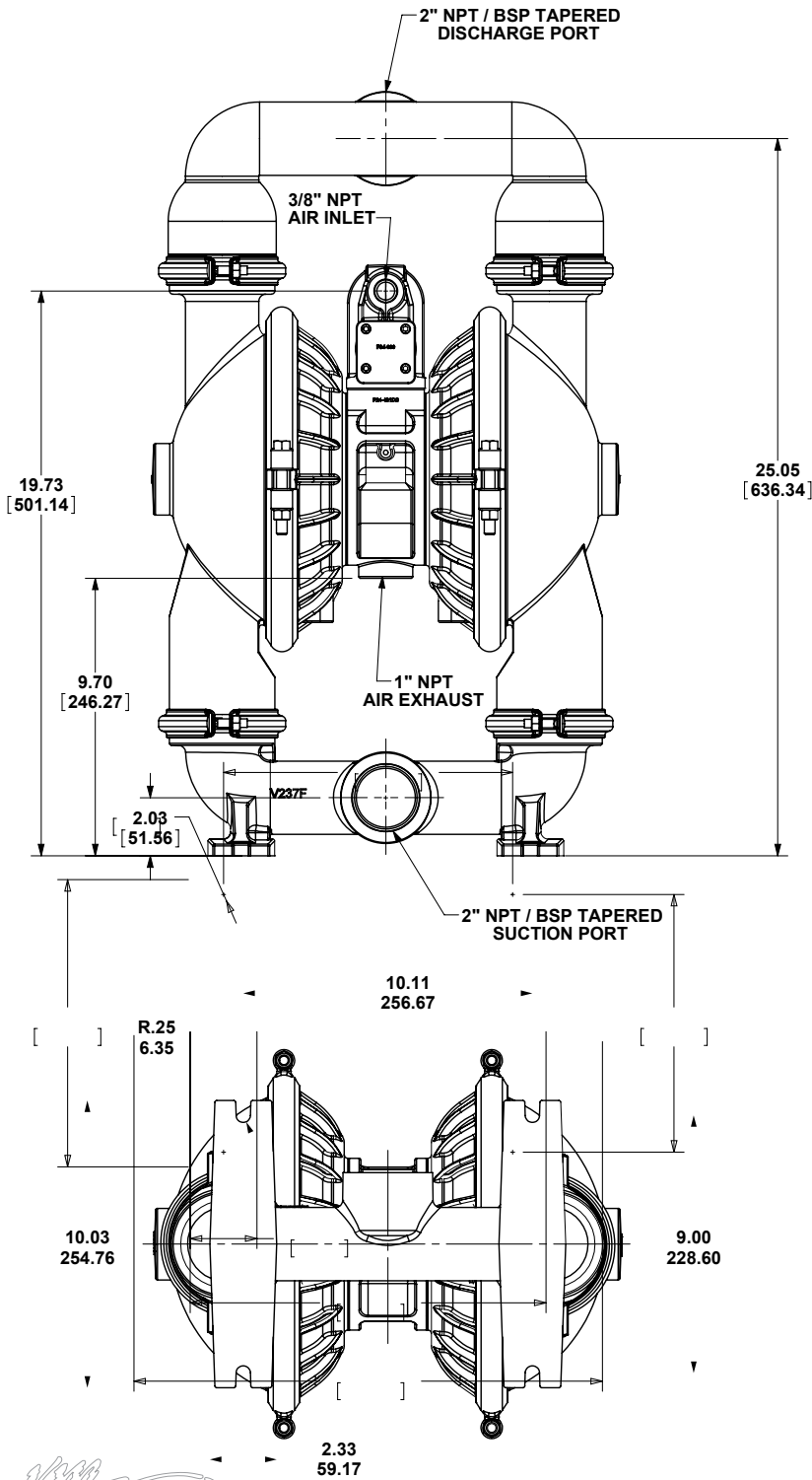


Dimensional Drawings

E2 Metallic Clamped

Dimensions in inches (mm dimensions in brackets)

The dimensions on this drawing are for reference only. A certified drawing can be requested if physical dimensions are needed.



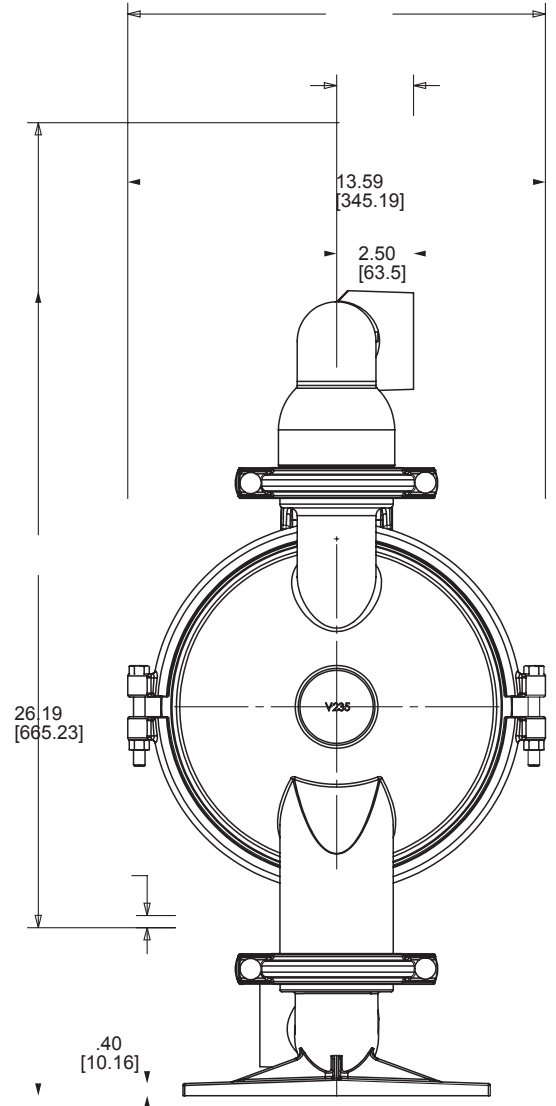
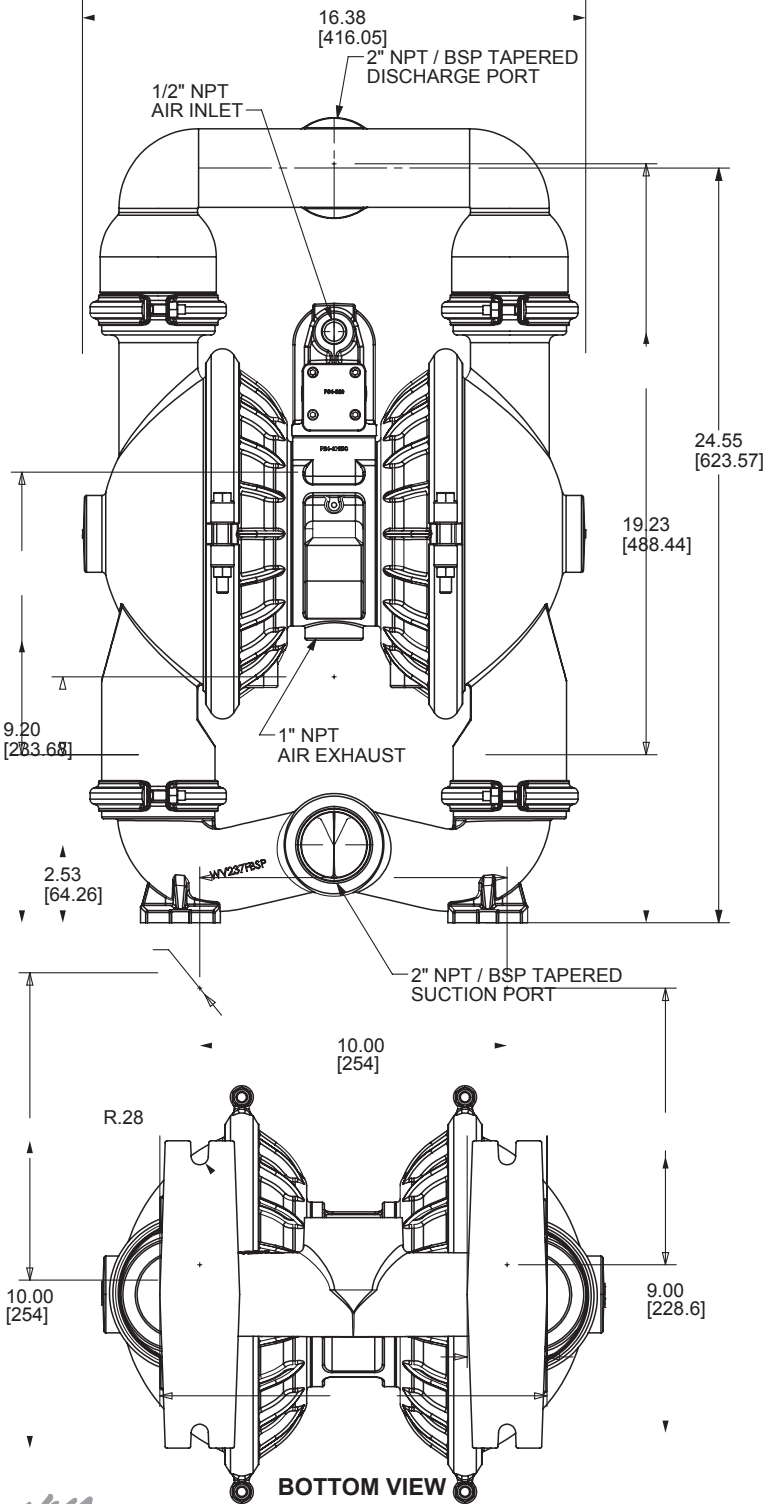
1: PUMP SPECS

Dimensional Drawings

E2 Metallic Clamped - Cast Iron

Dimensions in inches (mm dimensions in brackets)

The dimensions on this drawing are for reference only. A certified drawing can be requested if physical dimensions are needed.



1: PUMP SPECS

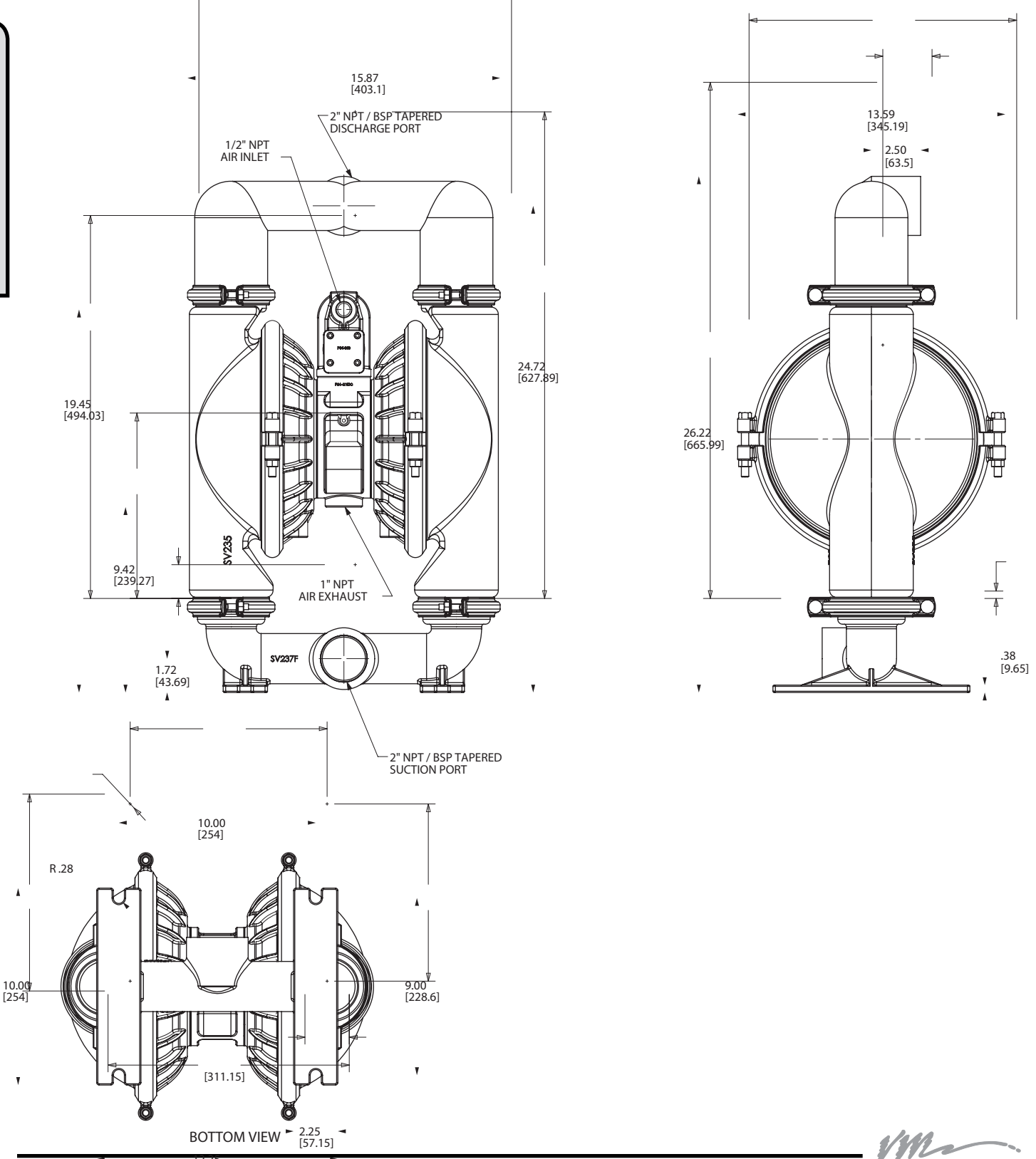
Dimensional Drawings

E2 Metallic Clamped - Stainless

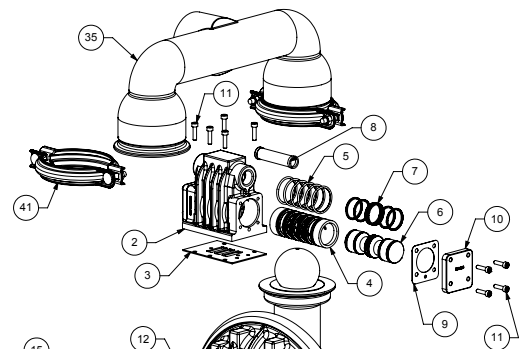
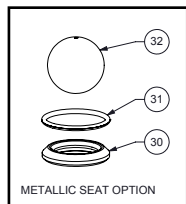
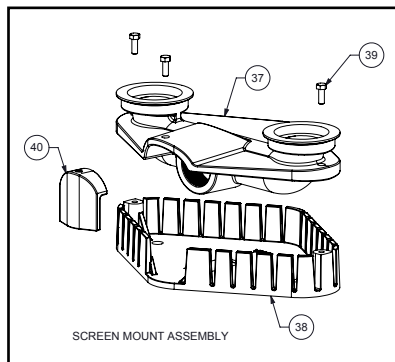
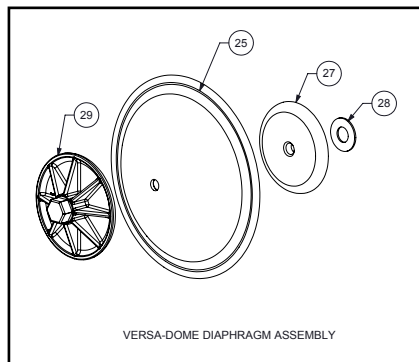
Dimensions in inches (mm dimensions in brackets)

The dimensions on this drawing are for reference only. A certified drawing can be requested if physical dimensions are needed.

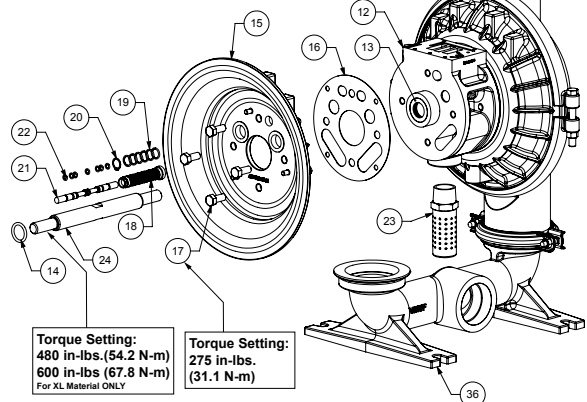
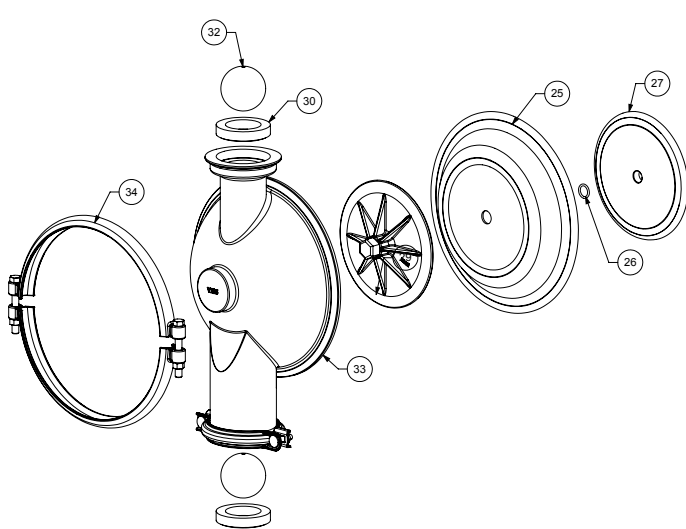
1: PUMP SPECS



Composite Repair Parts Drawing - Elastomeric and TPE Fitted



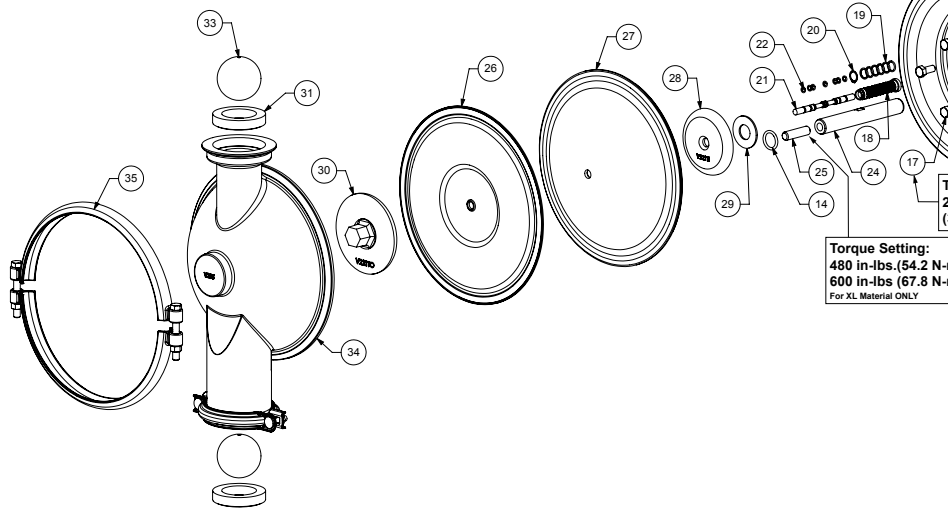
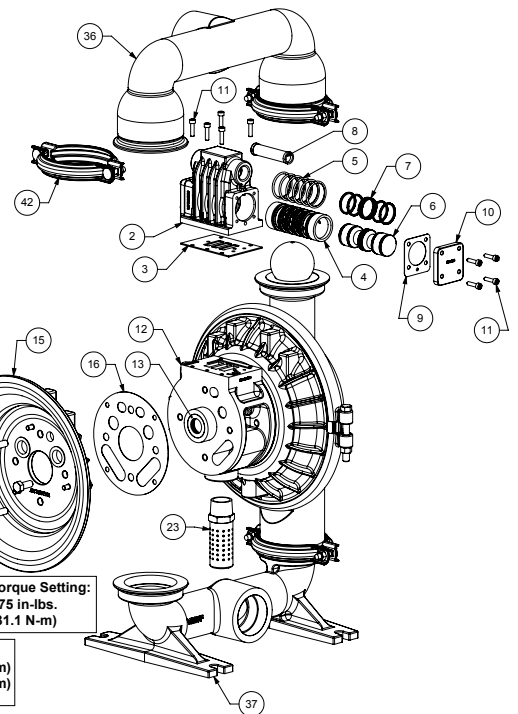
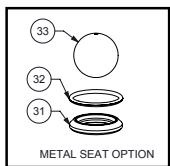
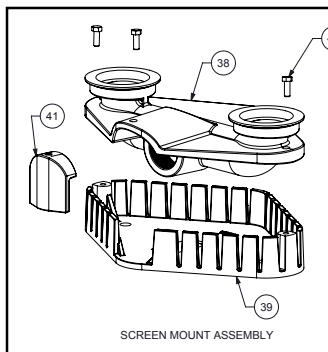
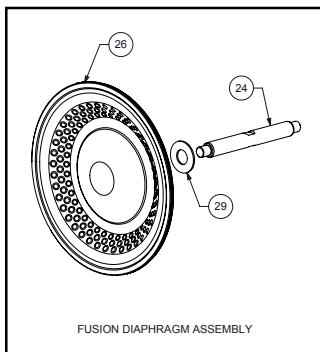
3: EXP VIEW



Torque Setting:
480 in-lbs. (54.2 N-m)
600 in-lbs (67.8 N-m)
For XL Material ONLY

Torque Setting:
275 in-lbs.
(31.1 N-m)

Composite Repair Parts Drawing - PTFE Fitted



Torque Setting:
 480 in-lbs. (54.2 N-m)
 600 in-lbs (67.8 N-m)
 For XL Material ONLY

3: EXP VIEW